



CHED Programs for U-I Linkages

Nelson G. Cainghog
Director, Office of Planning, Research, and Knowledge
Management

POLICIES

INDUSTRY REPRESENTATION IN THE CRAFTING OF POLICIES, STANDARDS, AND GUIDELINES

TECHNOLOGY ADOPTION AS A CRITERIA IN LEVELLING STATE UNIVERSITIES AND COLLEGES

PROVISION OF GRANTS TO ENCOURAGE AND CAPACITATE INDIVIDUAL FACULTY AND INSTITUTIONS TO ENGAGE WITH INDUSTRY

SECTORAL ENGAGEMENT

GRANTS

IMMERSION WORK IN:



PRIVATE
SECTOR



CIVIL
SOCIETY



GOVERNMENT

CHED PROVIDES MONTHLY GRANTS:

40

Hours of engagement output per
week

₱40,000

Monthly grant *

**grant amount dependent on degree and if full-time or part-time*

OTHER GRANTS

**GRANTS TO INSTITUTIONS WHICH CAN BE
USED TO START INNOVATION CENTERS
(PhP5,000,000 MAXIMUM)**

**RESEARCH GRANTS WHICH CAN INCLUDE
INDUSTRY PARTNERS
(PhP10,000,000 MAXIMUM)**

**SCHOLARSHIP FOR GRADUATE STUDIES
FOR NEARLY 6000 FACULTY
(POTENTIAL INDUSTRY BENEFIT)**

**PHILIPPINE CALIFORNIA ADVANCED
RESEARCH INSTITUTE**



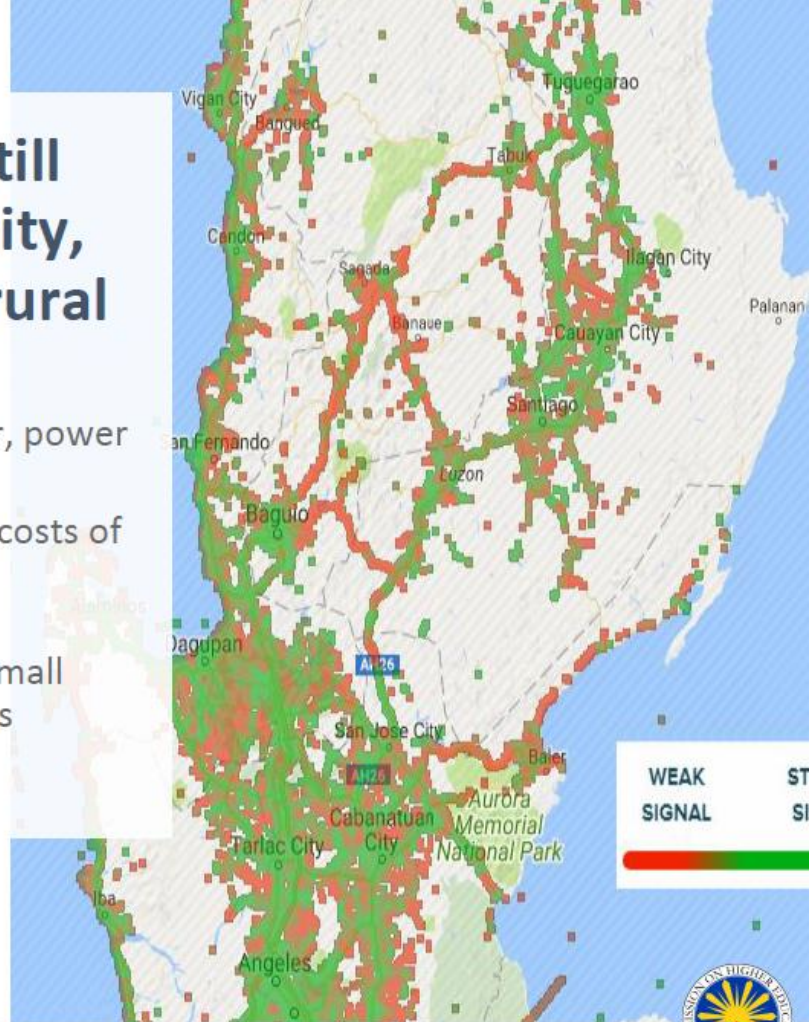
The Village Base Station: Connecting Communities Through Mobile Networks

Commission on Higher Education
Philippine-California Advanced Research Institutes
Institute for Information Infrastructure Development - 2017-31



Yet many barangays still lack cellular connectivity, especially in remote, rural areas

- Most barangays lack grid power, power supply intermittent for others
- High installation and operating costs of traditional base station (BTS) deployments
- Unprofitable for telcos due to small potential subscriber populations





Targeting small, unserved communities, the **VBTS system is more cost-effective** compared to traditional cellular deployments.

